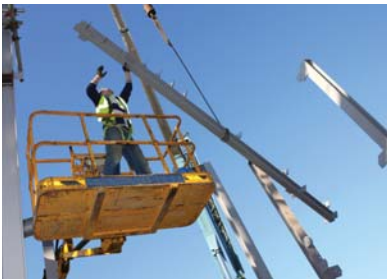




**SAFETY CENTER INCORPORATED**  
 3909 BRADSHAW ROAD | SACRAMENTO, CA 95827  
 (800) 825-7262 | (916) 366-7233 | (916) 366-1762 FAX

# COMPETENT PERSON **Fall Protection**



**2010**

**DATES:** Jun 24 • Jul 15 • Aug 24 • Oct 29

**LOCATION:** Safety Center Incorporated  
 3909 Bradshaw Road  
 Sacramento, CA 95827

**HOURS:** 8 am - 5 pm

**FEES:** Member Price \$130  
 Non-Member Price \$155

## WHO SHOULD ATTEND:

Any person who supervises or whose job entails working with fall protection equipment. **All participants must bring lanyard & harness!**

## OVERVIEW:

This one day course covers federal & state fall protection requirements. Not only do you explore active, passive & alternate fall protection systems in detail, you also get hands-on training with fall protection equipment. Some of the topics covered:

fall protection fundamentals • anchorage requirements • system inspections • proper care & use of equipment • fall hazard recognition • fall protection plans • lifelines • basic rescue considerations

## ENROLLMENT FORM



SAFETY CENTER INCORPORATED  
 3909 BRADSHAW ROAD  
 SACRAMENTO, CA 95827

(800) 825-7262 x219 PH  
 (916) 366-1762 FAX  
 QUEN@SAFETYCENTER.ORG



**FAX**



**E-MAIL**



**MAIL**



**PHONE**

NAME \_\_\_\_\_

EMPLOYER \_\_\_\_\_

POSITION \_\_\_\_\_

ADDRESS \_\_\_\_\_

CITY \_\_\_\_\_ STATE \_\_\_\_\_ ZIP \_\_\_\_\_

PHONE \_\_\_\_\_ FAX \_\_\_\_\_

E-MAIL \_\_\_\_\_

Enclosed is my check for \$ \_\_\_\_\_  
 made payable to *Safety Center Incorporated*

**if applicable - please provide a**  
 Purchase Order #: \_\_\_\_\_

Charge to my: \_\_\_\_\_ VISA \_\_\_\_\_ MasterCard

Account #: \_\_\_\_\_

Expiration Date: \_\_\_\_\_

Name on Card: \_\_\_\_\_

Signature: \_\_\_\_\_

**We offer the same quality courses @ your facility. Call today for details!**

**THANK YOU!**

05/27/10

**WWW.SAFETYCENTER.ORG**