



**SAFETY CENTER**  
INCORPORATED®

# INSIDE SAFETY

**AUGUST 2010**

**Volume 43 • Number 31**

## Proper Use of Insect and Mosquito Repellents

Repellents are an important tool to assist people in protecting themselves from mosquito-borne diseases.

The Center for Disease Control (CDC) recommends the use of products containing active ingredients which have been registered by the U.S. Environmental Protection Agency (EPA) for use as repellents applied to skin and clothing. EPA registration of repellent active ingredients indicates the materials have been reviewed and approved for efficacy and human safety when applied according to the instructions on the label.

Repellents for use on skin and clothing:

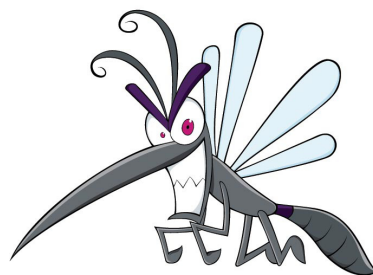
CDC evaluation of information contained in peer-reviewed scientific literature and data available from EPA has identified several EPA registered products that provide repellent activity sufficient to help people avoid the bites of disease carrying mosquitoes. Products containing these active ingredients typically provide reasonably long-lasting protection:

- **DEET** (Chemical Name: N,N-diethyl-m-toluamide or N,N-diethyl-3-methyl-benzamide)
- **Picaridin**(KBR 3023, Chemical Name: 2-(2-hydroxyethyl)-1-piperidinecarboxylic acid 1-methylpropylester)
- Oil of Lemon Eucalyptus\* or **PMD** (Chemical Name: para-Menthane-3,8-diol) the synthesized version of oil of lemon eucalyptus.

- **IR3535** (Chemical Name: 3-[N-Butyl-N-acetyl]-aminopropionic acid, ethyl ester)

EPA characterizes the active ingredients DEET and Picaridin as “conventional repellents” and Oil of Lemon Eucalyptus, PMD, and IR3535 as “biopesticide repellents”, which are derived from natural materials. For more information on repellent active ingredients see ([http://www.epa.gov/pesticides/health/mosquitoes/ai\\_insectrp.htm](http://www.epa.gov/pesticides/health/mosquitoes/ai_insectrp.htm)).

Published data indicate that repellent efficacy and duration of protection vary considerably among products and among mosquito species and are markedly affected by ambient temperature, amount of perspiration, exposure to water, abrasive removal, and other factors.



In general, higher concentrations of active ingredient provide longer duration of protection, regardless of the active ingredient, although concentrations above ~50% do not offer a marked increase in protection time. Products with <10% active ingredient may offer only limited protection, often from 1-2 hours. Products that offer sustained

release or controlled release (micro-encapsulated) formulations, even with lower active ingredient concentrations, may provide longer protection times. Regardless of what product you use, if you start to get mosquito bites reapply the repellent according to the label instructions or remove yourself from the area with biting insects if possible. These recommendations are for domestic use in the United States where EPA-registered products are readily available. See CDC Travelers' Health website for additional recommendations concerning protection from insects when traveling outside the United States.

### Repellents for use on clothing:

Certain products containing permethrin are recommended for use on clothing, shoes, bed nets, and camping gear, and are registered with EPA for this use. Permethrin is highly effective as an insecticide and as a repellent. Permethrin-treated clothing repels and kills ticks, mosquitoes, and other arthropods and retains this effect after repeated laundering. The permethrin insecticide should be reapplied following the label instructions. Some commercial products are available pretreated with permethrin. EPA recommends the following precautions when using insect repellents: Apply repellents only to exposed skin and/or clothing (as directed on the product label.) Do not use repellents under clothing.

For more information please visit: <http://www.cdc.gov/ncidod/dvbid/west-nile/RepellentUpdates.htm>.

## Wilderness First Aid

**2010 Dates:** October 14

**Location:** Safety Center Incorporated  
3909 Bradshaw Road  
Sacramento, CA 95827

**Hours:** 8 am. - 5 pm.

**Fees:** Member Price \$75

Non-Member Price \$90



### Topics covered:

- Action at an Emergency
- Victim Assessment & Urgent Care
- Care of Bleeding, Wounds & Burns
- Dressings & Bandages
- Bone, Joint & Muscle Injuries
- Physical & Environmental Hazards
- Plant & Animal Toxins
- Animal, Snake & Insect Bites & Stings

## Incident Investigation & Analysis

*What you don't know can hurt you!*

**Date:** September 23, 2010

**Location:** 3909 Bradshaw Road  
Sacramento, CA 95827

**Hours:** 8 am - 5 pm

**Fees:** Member Price \$ 150

Non-Member: \$ 175

Understand the complex issues of incident investigation & analysis utilizing multi-criteria decision making principles

- Learn why safety's obscure, ambiguous & ill defined terminology poses such a threat to the practice of incident investigation & analysis.
- Review the common mistakes safety professionals make in trying to investigate and analyze incidents.
- Review the fundamental principles of incident photography and the collection of transitory evidence.

## California Safety Forums

**Sacramento Regional Safety Forum (SRSF)**

September's Meeting Topic:

**Fall Protection**

**Date:** September 2, 2010

**Time:** 7:30am - 9:30am

**Location:** 3909 Bradshaw Road,  
Sacramento

**Safety Forum of the Inland Empire (SFIE)**

August's Meeting Topic

**Disaster Preparedness**

**Date:** August 24, 2010

**Time:** 8:30am – 10:30am

**Location:** Goldie Lewis Community

## Member of the Month

**City of Galt – Public Works**

### Open Enrollment - August, September & October 2010

August 2010		Mem	Non	September 2010		Mem	Non
16-19	4-Day Premium Forklift Trainer Certification	1,200	1,250	24	Ladder Safety (SoCA)	50	65
18	Competent Person Excavation	130	155	30	4-Hour Defensive Driving Course (SoCA)	50	65
18	1-Day Disaster Preparedness	150	175				
19	Competent Person Excavation	130	155				
19	Scaffold User Training (SoCA)	130	155				
20	4-Hour Defensive Driving Course	50	65	1	First Aid CPR (SoCA)	55	70
20	IVES Trainer Recertification	230	250	4-5	Fed OSHA 10 for General Industry	175	185
24	Competent Person Fall Protection	130	155	4-7	First Aid/CPR/AED Instructor	425	480
25	First Aid/CPR	55	70	4-8	Loader Group Trainer	1,450	1,500
26	Temporary Traffic Control & Flagging	75	95	8	First Aid/CPR	55	70
26	Cal OSHA 8 Commercial Construction (SoCA)	100	150	11-12	2-Day Express Counterbalanced Forklift Trainer Certification	945	995
30-31	Fed OSHA 10 for Construction			11-12	4-Hour Defensive Driving Instructor Course	310	365
	<b>SUMMER SPECIAL</b>	135	150	12-13	Fed OSHA 10 for Construction (SoCA)	175	185
				13	Rough Terrain Upgrade	445	495
				13	1-Day Disaster Preparedness	150	175
				14	Cal OSHA 8 Commercial Construction	100	150
				14	Temporary Traffic Control & flagging (SoCA)	75	95
				14	Wilderness First Aid	75	90
				18-21	4-Day Premium Forklift Trainer Cert. (SoCA)	1,200	1,250
				19-21	Training Programs and Presentations	690	825
				20	Confined Space Awareness TTT	325	375
				21	Confined Space Awareness (SoCA)	75	95
				22	IVES Trainer Recertification (SoCA)	230	250
				22	Slips, Trips and Falls (SoCA)	50	65
				26	Workplace Violence	75	95
				28	Competent Person Excavation	130	155
				29	Competent Person Fall Protection	130	155
				29	4-Hour Defensive Driving Course	50	65

Please visit our website [www.safetycenter.org](http://www.safetycenter.org) for updates and course descriptions

All courses are held at Safety Center's Sacramento Campus, 3909 Bradshaw Road, Sacramento, CA 95827 except those noted with "(SoCA)" for Southern California courses. Please contact Gayleen Grigoreas, (909) 625-9650, to enroll in Southern California courses.